



# Cleaner (6am-2pm)

## Candidate Brief

AESSEAL plc, Mill Close, Rotherham, S60 1BZ

**Email:** [Careers@aesseal.co.uk](mailto:Careers@aesseal.co.uk)

# AESSEAL® overview



AESSEAL® is part of the AES Engineering Ltd Group, a global engineering and reliability company with sales exceeding £265 million. We specialise in the design and manufacture of mechanical seals and seal support systems. Our innovative products are designed to minimise environmental impact, helping to combat climate change.

At AESSEAL®, we take pride not only in our exceptional business reputation but also in our commitment to exceeding social responsibilities. We have a strong track record of developing talent within the organisation, providing apprentices and employees with opportunities to grow, take on additional responsibilities, and advance into management roles.

View our day in the life videos:

We actively encourage employee involvement in impactful initiatives, such as collaborating with schools to inspire the next generation of engineers and entrepreneurs, sponsoring GUTS events, and achieving global Net Zero. AESSEAL® is also a recipient of 15 Queen's Awards, plus numerous ISO certifications. The business has a track record of achieving year-on-year sales and profit growth and has invested millions of pounds in facilities and machinery which contribute to making AESSEAL® a unique place to work.



# Our core values

Our Purpose is to give our customers such exceptional service that they need never consider alternative sources of supply.

- We pursue excellence in order to continuously improve.
- We promote, embrace and manage change.
- We champion honesty and fairness.
- We are committed to protecting the environment.
- We create an environment where we are happy at work.

Our vision is to become the leading global reliability business, delivering solutions to help industries save water, energy, cut pollution, and create a better world.

Our focus - to us, the customer really is king. It is our focus on customer service and quality that has seen us grow year on year since we were established in 1979. Today we have 66 trading entities operating from 161 locations in over 100 countries, and employ a global network of sales engineers and technical support specialists..

C. J. Rea, Managing Director





# The benefits

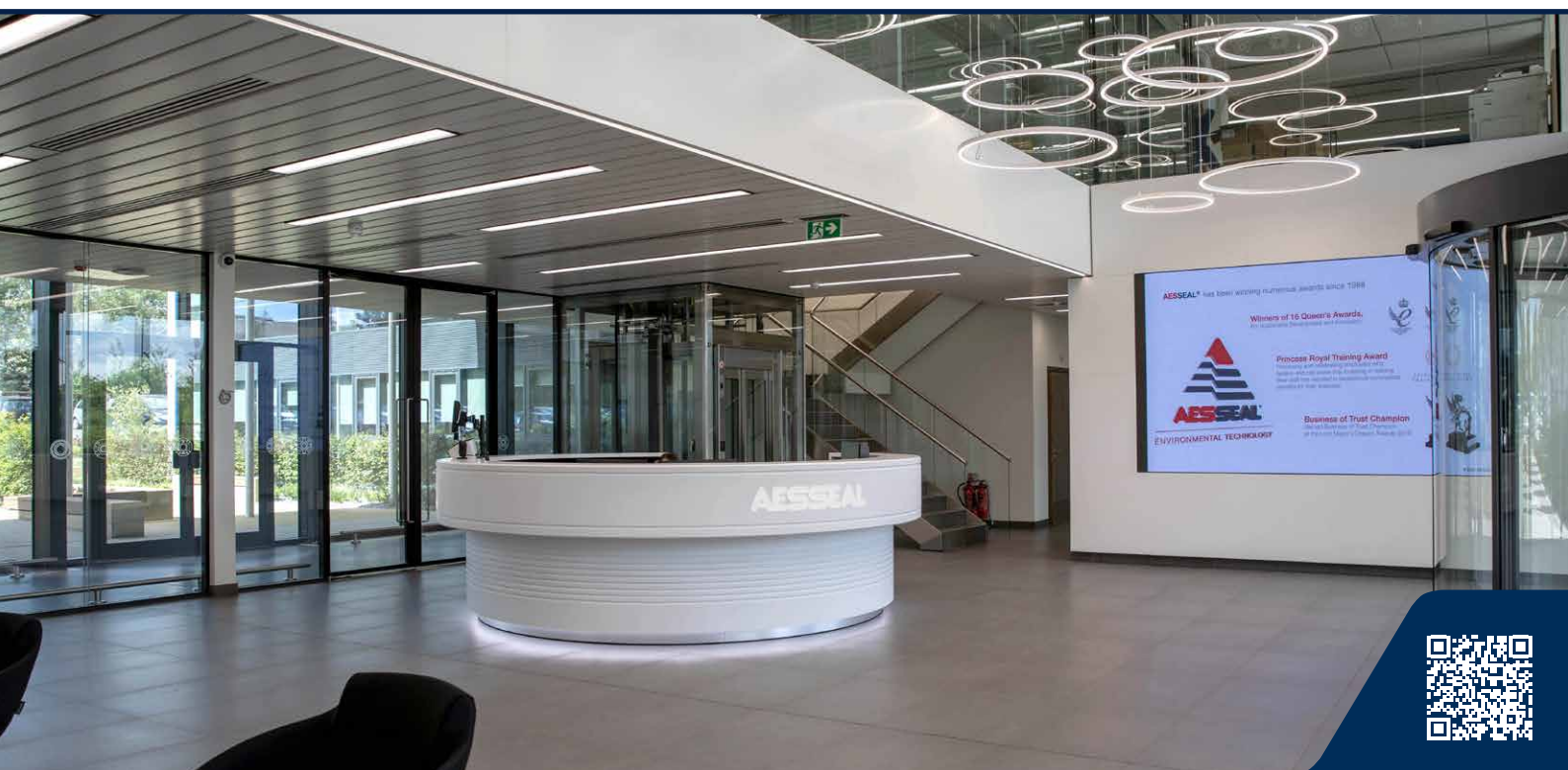
At AESSEAL®, we recruit and develop the most talented individuals, whether that's in engineering, sales, service, or support roles.

Our focus - to us, the customer really is king. It is our focus on customer service and quality that has seen us grow year on year since we were established in 1979. Today, we have 230 locations worldwide, supplying customers in 104 countries, and employ a global network of sales engineers and technical support specialists.

Working collaboratively across our global operation, we are one 'family' community, where teamwork is encouraged and clarity, mutual respect, and understanding are key. If you would like to find out more about our current vacancies and apprenticeship schemes, please navigate using the careers menu.

## What are the benefits to working for AESSEAL®?

- Pension Scheme including Salary Sacrifice
- Aspire to Retire Scheme
- Life Assurance
- Length of Service Scheme (5 years, 10 years, 15 years, 20 years, 25 years, 30 years and 35 years)
- Mindful Employer – Supporting Mental Health
- Cycle2Work Scheme
- EV Car Scheme – partnered with Octopus Energy
- BenefitHub – exclusive discounts, rewards and cashback
- STAR Awards - £250 Amazon Voucher
- Sporting Tickets
- Westfield Health cover at discounted rates
- Help@Hand – Employee Wellbeing and Mental Health
- AES Tree Walk
- Free On-Site Parking and EV Charging Facilities



# Job purpose



To maintain high levels of housekeeping and cleanliness at Mill Close and to assist with hospitality when required to be an effective member of the team.

## Job Dimensions

To operate as part of a team of seven cleaners at the Company's Global Headquarters to ensure that the site is kept clean for employees and visitors.

## Cleaner (6am-2pm)

Job Title: Cleaner

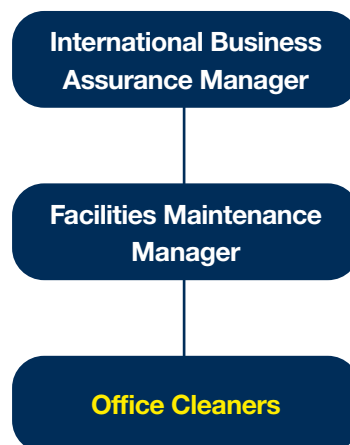
Department: Cleaners / Facilities

Location: Mill Close, Rotherham

Organisation: AESSEAL plc

Reports to: Department Manager

## Organisational Chart



# Principle accountabilities

1. To clean toilet facilities, including toilets, sinks, floors and tiles
2. To clean kitchen and canteen facilities.
3. To vacuum carpeted areas and sweep and mop tiled floors.
4. To clean internal glass
5. To prepare meeting rooms with tea / coffee and buffets where required for visitors/internal meetings
6. To wipe doors and skirting boards at least weekly.
7. To dust desks, shelving and fittings.
8. To report any issues of damage or repairs to management.
9. To order cleaning materials where required.
10. To fully support excellent working practices, including, Health, Safety and Environmental compliance, team behaviour, housekeeping, continuous improvement, compliance with Company procedures

**N.B This list is not exhaustive, the job holder is required to carry out reasonable tasks within their level of skill and ability.**



# Skills, knowledge and experience

Criteria	Essential	Desirable
<b>Qualifications</b>	<ul style="list-style-type: none"><li>No formal academic qualifications required.</li></ul>	<ul style="list-style-type: none"><li>Driving license</li><li>Food hygiene Certificate</li></ul>
<b>Skills &amp; Knowledge</b>		<ul style="list-style-type: none"><li>Attention to detail</li></ul>
<b>Experience</b>	<ul style="list-style-type: none"><li>Previous experience of working in a similar role</li></ul>	<ul style="list-style-type: none"><li>Working within a customer-focused environment.</li><li>Working in a fast paced environment.</li></ul>
<b>Character</b>	<ul style="list-style-type: none"><li>Excellent timekeeping</li><li>Desire to provide exceptional customer service</li><li>Eager to assist in the continuous improvement of the organisation</li><li>Ability to promote, embrace and manage change</li><li>Contribute to a happy working environment</li><li>Effective communicator</li><li>Passionate about quality of work</li></ul>	

AESSEAL plc, Mill Close, Rotherham, S60 1BZ

**Email:** [Careers@aes seal.co.uk](mailto:Careers@aes seal.co.uk)

