



Groundskeeper Apprentice

Candidate Brief

AESSEAL plc, Mill Close, Rotherham, S60 1BZ

Email: Careers@aesseal.co.uk



AESSEAL® overview



AESSEAL® is part of the AES Engineering Ltd Group, a global engineering and reliability company with sales exceeding £265 million. We specialise in the design and manufacture of mechanical seals and seal support systems. Our innovative products are designed to minimise environmental impact, helping to combat climate change.

At AESSEAL®, we take pride not only in our exceptional business reputation but also in our commitment to exceeding social responsibilities. We have a strong track record of developing talent within the organisation, providing apprentices and employees with opportunities to grow, take on additional responsibilities, and advance into management roles.

View our day in the life videos:

We actively encourage employee involvement in impactful initiatives, such as collaborating with schools to inspire the next generation of engineers and entrepreneurs, sponsoring GUTS events, and achieving global Net Zero. AESSEAL® is also a recipient of 15 Queen's Awards, plus numerous ISO certifications. The business has a track record of achieving year-on-year sales and profit growth and has invested millions of pounds in facilities and machinery which contribute to making AESSEAL® a unique place to work.



Our core values

Our Purpose is to give our customers such exceptional service that they need never consider alternative sources of supply.

- We pursue excellence in order to continuously improve.
- We promote, embrace and manage change.
- We champion honesty and fairness.
- We are committed to protecting the environment.
- We create an environment where we are happy at work.

Our vision is to become the leading global reliability business, delivering solutions to help industries save water, energy, cut pollution, and create a better world.

Our focus - to us, the customer really is king. It is our focus on customer service and quality that has seen us grow year on year since we were established in 1979. Today we have 66 trading entities operating from 161 locations in over 100 countries, and employ a global network of sales engineers and technical support specialists..

C. J. Rea, Managing Director



The benefits

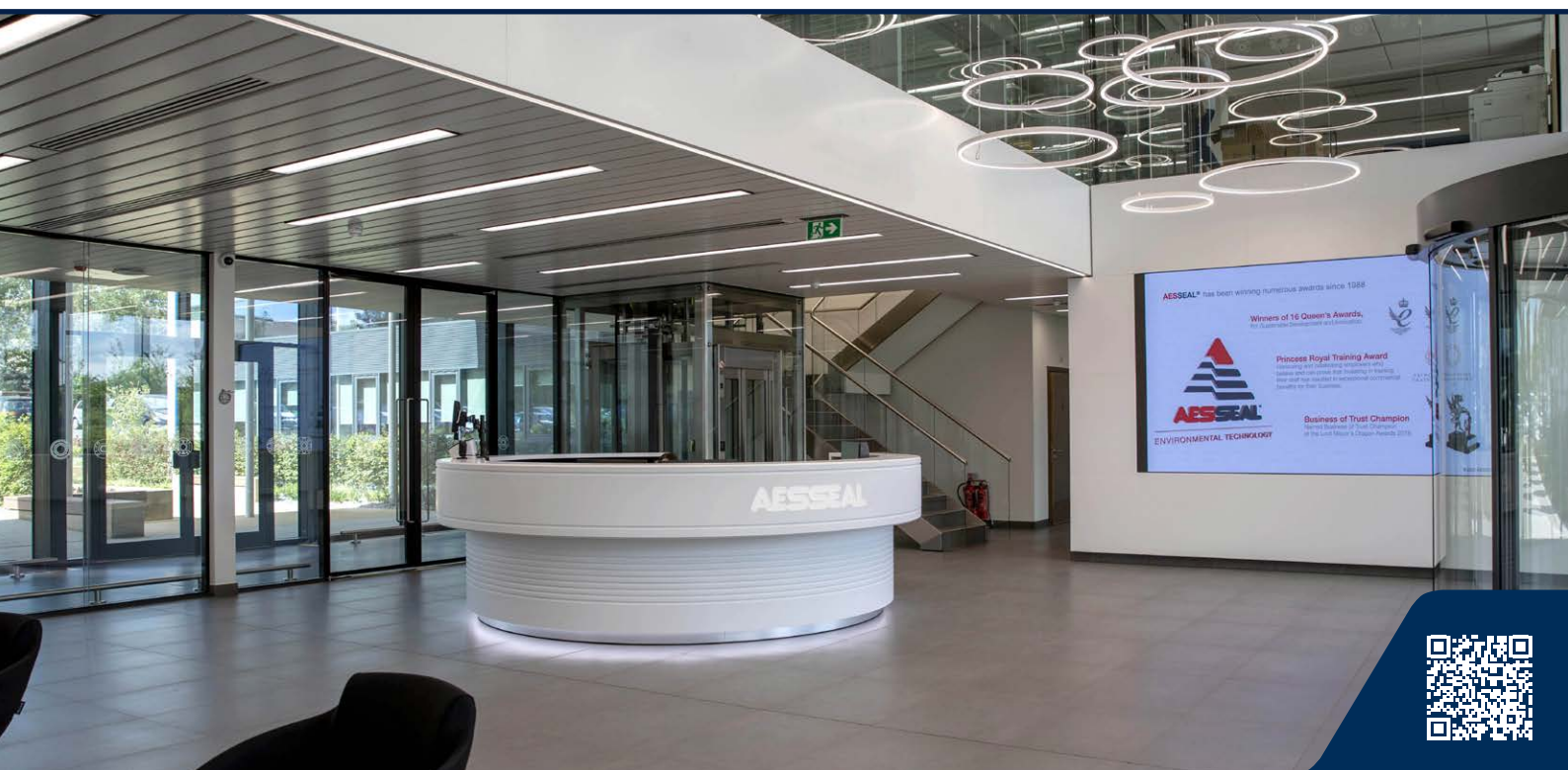
At AESSEAL®, we recruit and develop the most talented individuals, whether that's in engineering, sales, service, or support roles.

Our focus - to us, the customer really is king. It is our focus on customer service and quality that has seen us grow year on year since we were established in 1979. Today, we have 230 locations worldwide, supplying customers in 104 countries, and employ a global network of sales engineers and technical support specialists.

Working collaboratively across our global operation, we are one 'family' community, where teamwork is encouraged and clarity, mutual respect, and understanding are key. If you would like to find out more about our current vacancies and apprenticeship schemes, please navigate using the careers menu.

What are the benefits to working for AESSEAL®?

- Pension Scheme including Salary Sacrifice
- Aspire to Retire Scheme
- Life Assurance
- Length of Service Scheme (5 years, 10 years, 15 years, 20 years, 25 years, 30 years and 35 years)
- Mindful Employer – Supporting Mental Health
- Cycle2Work Scheme
- EV Car Scheme – partnered with Octopus Energy
- BenefitHub – exclusive discounts, rewards and cashback
- STAR Awards - £250 Amazon Voucher
- Sporting Tickets
- Westfield Health cover at discounted rates
- Help@Hand – Employee Wellbeing and Mental Health
- AES Tree Walk
- Free On-Site Parking and EV Charging Facilities



Job purpose

To join the facilities team and to be responsible for housekeeping and upkeep of the outdoor areas at our Rotherham sites.

Job Dimensions

- Working as part of a team to ensure the maintenance and upkeep of the sites is kept at a high standard
- This role involves working outside for the majority of the time, all year
- Working hours are 9am – 5pm Monday to Friday, occasional weekend work may be required

Groundskeeper Apprentice Role

Job Title: Groundskeeper Apprentice

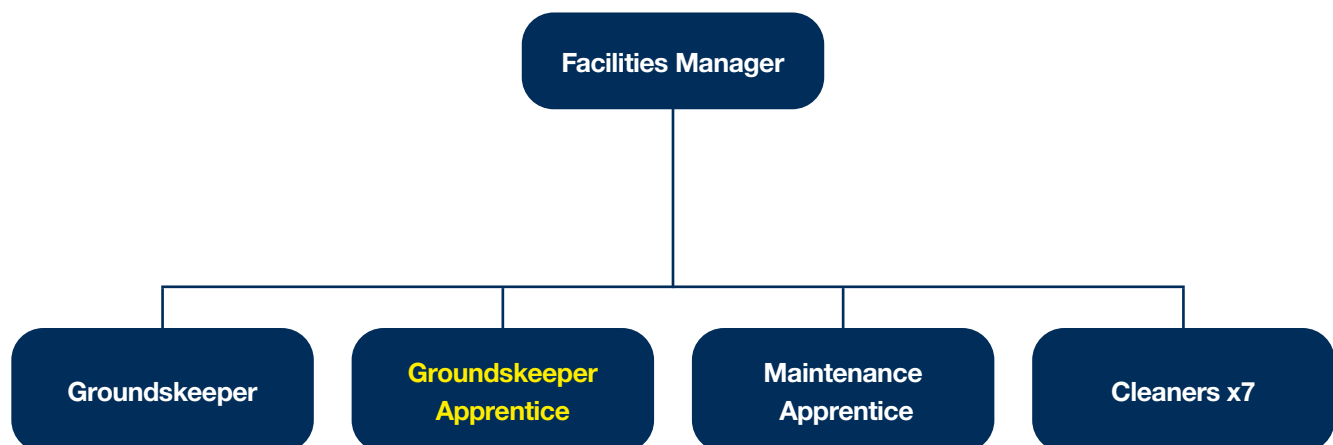
Department: Facilities

Location: Mill Close, Rotherham, S60 1BZ

Organisation: AESSEAL plc

Reports to: Branch Manager

Organisational Chart



- A.** Maintaining the site landscaping to a high standard.
- B.** Maintaining lawns, trees, shrubs, hedges, flowers.
- C.** Operating and maintaining hand and power tools.
- D.** Operating and maintaining lawn mowing and other equipment.
- E.** Keeping grounds free from litter and debris
- F.** Weeding
- G.** Watering of lawns, trees and plants
- H.** Leaf and debris blowing and collecting
- I.** General DIY tasks as required from time to time
- J.** Jet washing slabs, building etc
- K.** Snow clearing and gritting in winter months
- L.** Able to work flexibly and some overtime where required
- M.** The role involves frequent standing, walking, reaching and carrying.
- N.** Some care of the wildlife on site may be required (eg; hedgehogs/bees/rabbits)
- O.** Maintain an area where biodiversity is of key importance

N.B This list is not exhaustive, the job holder is required to carry out reasonable tasks within their level of skill and ability.



Skills, knowledge and experience

Criteria	Essential	Desirable
Qualifications	NVQ level 2 (or equivalent) or above in engineering / manufacturing	Driving license
Skills & Knowledge	<p>Happy to work outside in all seasons</p> <p>Awareness of health and safety practises</p> <p>An interest in maintaining sustainable work spaces</p>	Experience of a CMM
Experience		Previous experience of labouring or groundskeeper work
Character	<p>Desire to provide exceptional customer service</p> <p>Ability to work on your own initiative and under pressure</p> <p>Ability to work as part of a small team</p> <p>Ability to promote, embrace and manage change</p> <p>Contribute to a happy working environment</p> <p>Effective communicator</p> <p>You must be self-motivated and enthusiastic and be able to demonstrate your ability to investigate and solve problems as they arise.</p> <p>Hard-working, meticulous, and patient</p> <p>Ability to follow instructions</p> <p>Interest/passion towards gardening/ landscaping</p>	

AESSEAL plc, Mill Close, Rotherham, S60 1BZ

Email: Careers@aesseal.co.uk

