



# Placement Trainee Accountant

## Candidate Brief

AESSEAL plc, Mill Close, Rotherham, S60 1BZ

**Email:** [Careers@aesseal.co.uk](mailto:Careers@aesseal.co.uk)





# AESSEAL® overview



AESSEAL® is a global engineering business, in excess of £200 million in revenue which designs, and manufactures precision-engineered mechanical seals and seal support systems. The products that AESSEAL® create will reduce the impact on the environment and thereby reducing the negative impact on climate change.

In addition to our excellent business reputation, at AESSEAL® we pride ourselves on exceeding our social responsibilities. We have a track record of developing apprentices and people within the business, giving employees the opportunity to grow and undertake additional responsibilities in management positions. AESSEAL® also strives for our employees to be part of some very successful initiatives, including working with schools to inspire the next generation of engineers and entrepreneurs, sponsoring GUTS events, as well as achieving carbon Net Zero.

AESSEAL® is also a recipient of 15 Queen's Awards, plus numerous ISO certifications. The business has a track record of achieving year-on-year sales and profit growth and has invested millions of pounds in facilities and machinery which contribute to making AESSEAL® a unique place to work.



# Our core values

Our Purpose is to give our customers such exceptional service that they need never consider alternative sources of supply.

- We pursue excellence in order to continuously improve.
- We promote, embrace and manage change.
- We champion honesty and fairness.
- We are committed to protecting the environment.
- We create an environment where we are happy at work.

Our vision is to become the leading global reliability business, delivering solutions to help industries save water, energy, cut pollution, and create a better world.

Our focus - to us, the customer really is king. It is our focus on customer service and quality that has seen us grow year on year since we were established in 1979. Today, we have 230 locations worldwide, supplying customers in 104 countries, and employ a global network of sales engineers and technical support specialists.

C. J. Rea, Managing Director



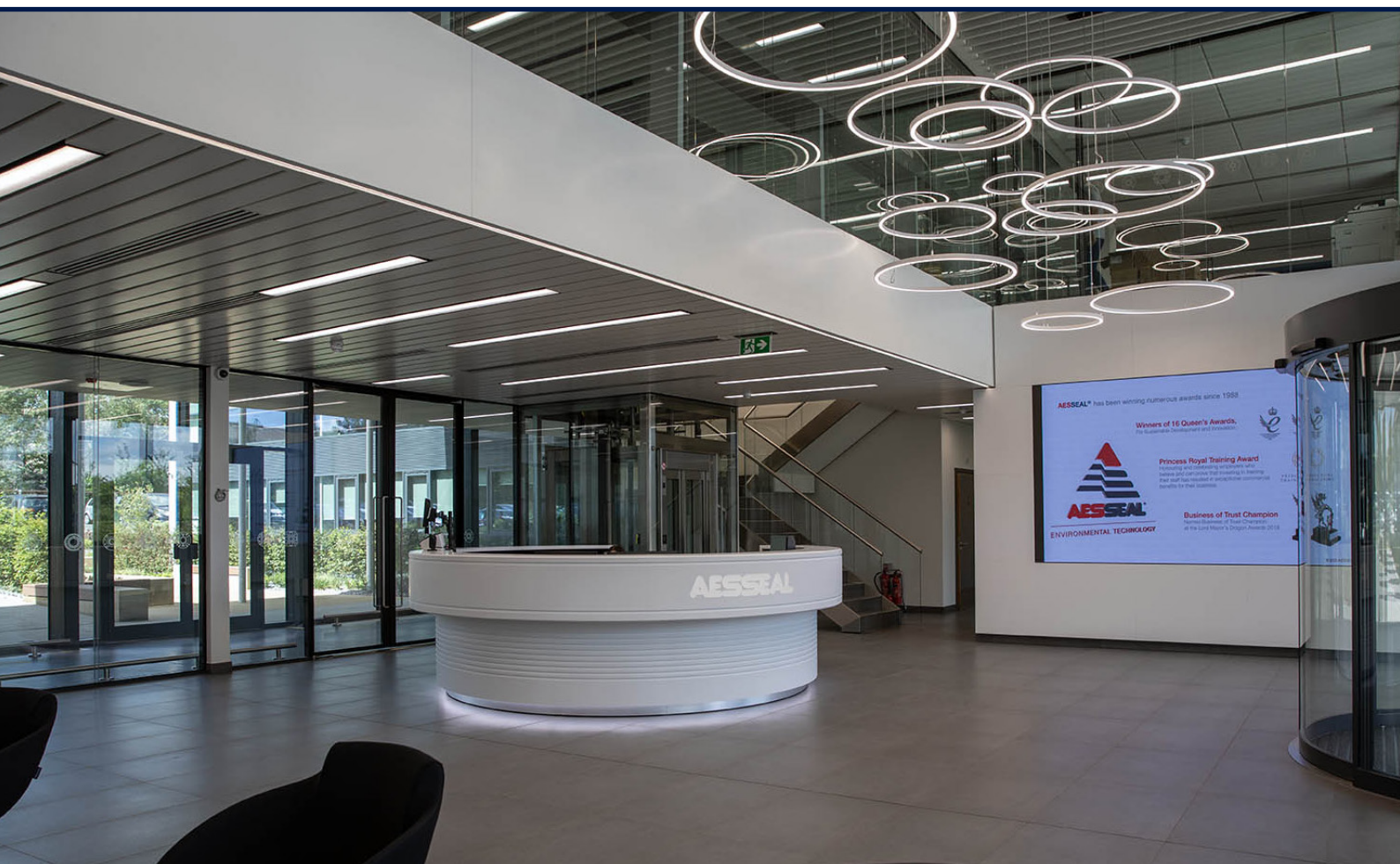


# The benefits

At AESSEAL®, we recruit and develop the most talented individuals, whether that's in engineering, sales, service, or support roles.

## What are the benefits to working for AESSEAL®?

- Salary sacrifice pension scheme via Peoples Pension
- 32 Holiday Days including bank holidays
- Free On-Site Parking
- 2 x Salary Life Assurance
- Westfield health cover at discounted rates
- Bike Storage
- EV charging facilities
- Long Service Awards



The job purpose of the placement student is to provide financial information and analysis to help the organisation make informed business decisions. The successful candidate will perform accounting duties to assist the group team in their preparation of the management accounts and monthly reporting tasks. Their key areas of focus will also include budget management, forecasting, and the evaluation of prospective acquisitions, all geared towards enhancing managerial planning and oversight.

## Placement Trainee Accountant

Job Title: Placement Trainee Accountant

Department: Finance

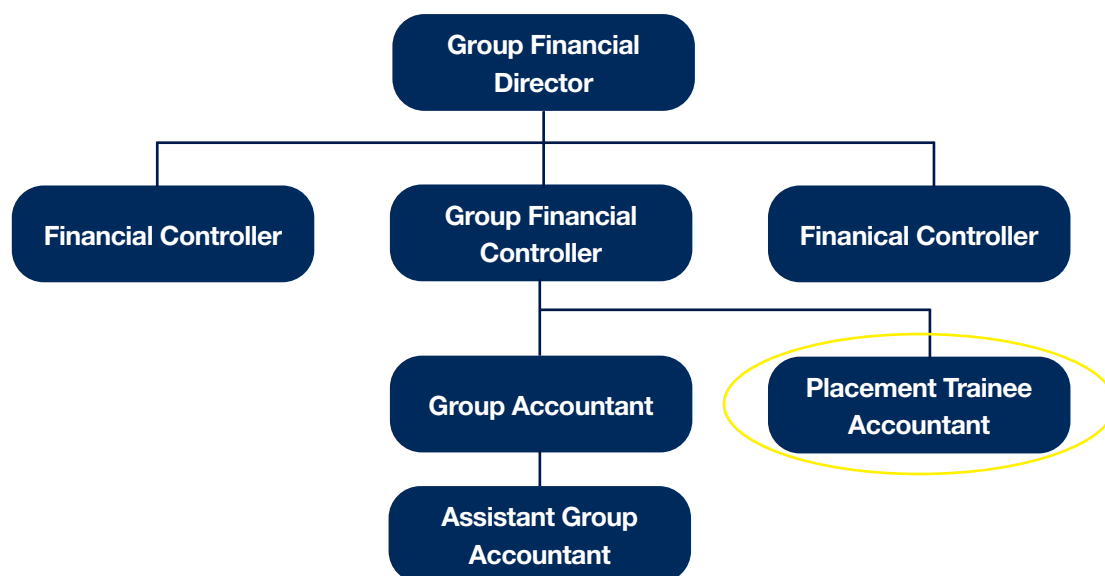
Location: Mill Close, Bradmarsh Business Park, Rotherham, S60 1BZ

Organisation: AESSEAL plc

Reports to: Group Financial Controller

Has responsibility for:

## Organisational Chart



- A.** Reporting subsidiary monthly figures
- B.** Assisting with preparation of the group budget
- C.** Assisting with subsidiary re-forecasting
- D.** Understanding the business as a whole and how its performing
- E.** Assisting with the preparation of monthly management accounts
- F.** Assist in creating internal workflows
- G.** Assist in digitalising and streamlining processes
- H.** Liaise with external auditors as required

**N.B This list is not exhaustive, the job holder is required to carry out reasonable tasks within their level of skill and ability.**

# Skills, knowledge and experience

Criteria	Essential	Desirable
<b>Qualifications</b>	Working towards a 2:1 degree or above in a related discipline or AAT qualified	Additional A Levels to C+ in Maths (or equivalent) A level C+ in Maths (or equivalent)
<b>Skills &amp; Knowledge</b>	Excellent attention to detail and shows initiative Strong organisational skills Focus and commitment to achieving deadlines Strong business acumen and interest	
<b>Experience</b>		Previous experience of working within an accounts department Previous experience of working in a customer service focused environment
<b>Character</b>	Desire to provide exceptional customer service Eager to assist in the continuous improvement of the organisation Ability to promote, embrace and manage change Contribute to a happy working environment Effective communicator	

To submit your application, kindly send your CV and cover letter to the provided email address.

AESSEAL plc, Mill Close, Rotherham, S60 1BZ

**Email:** [Careers@aesseal.co.uk](mailto:Careers@aesseal.co.uk)