



Stores Operative

Candidate Brief

AESSEAL plc, Mill Close, Rotherham, S60 1BZ

Email: Careers@aes seal.co.uk



ENVIRONMENTAL TECHNOLOGY

AESSEAL® overview



AESSEAL® is part of the AES Engineering Ltd Group, a global engineering and reliability company with sales exceeding £265 million. We specialise in the design and manufacture of mechanical seals and seal support systems. Our innovative products are designed to minimise environmental impact, helping to combat climate change.

At AESSEAL®, we take pride not only in our exceptional business reputation but also in our commitment to exceeding social responsibilities. We have a strong track record of developing talent within the organisation, providing apprentices and employees with opportunities to grow, take on additional responsibilities, and advance into management roles.

View our day in the life videos:

We actively encourage employee involvement in impactful initiatives, such as collaborating with schools to inspire the next generation of engineers and entrepreneurs, sponsoring GUTS events, and achieving global Net Zero. AESSEAL® is also a recipient of 15 Queen's Awards, plus numerous ISO certifications. The business has a track record of achieving year-on-year sales and profit growth and has invested millions of pounds in facilities and machinery which contribute to making AESSEAL® a unique place to work.



Our Purpose is to give our customers such exceptional service that they need never consider alternative sources of supply.

- We pursue excellence in order to continuously improve.
- We promote, embrace and manage change.
- We champion honesty and fairness.
- We are committed to protecting the environment.
- We create an environment where we are happy at work.

Our vision is to become the leading global reliability business, delivering solutions to help industries save water, energy, cut pollution, and create a better world.

Our focus - to us, the customer really is king. It is our focus on customer service and quality that has seen us grow year on year since we were established in 1979. Today we have 66 trading entities operating from 161 locations in over 100 countries, and employ a global network of sales engineers and technical support specialists..

C. J. Rea, Managing Director



The benefits

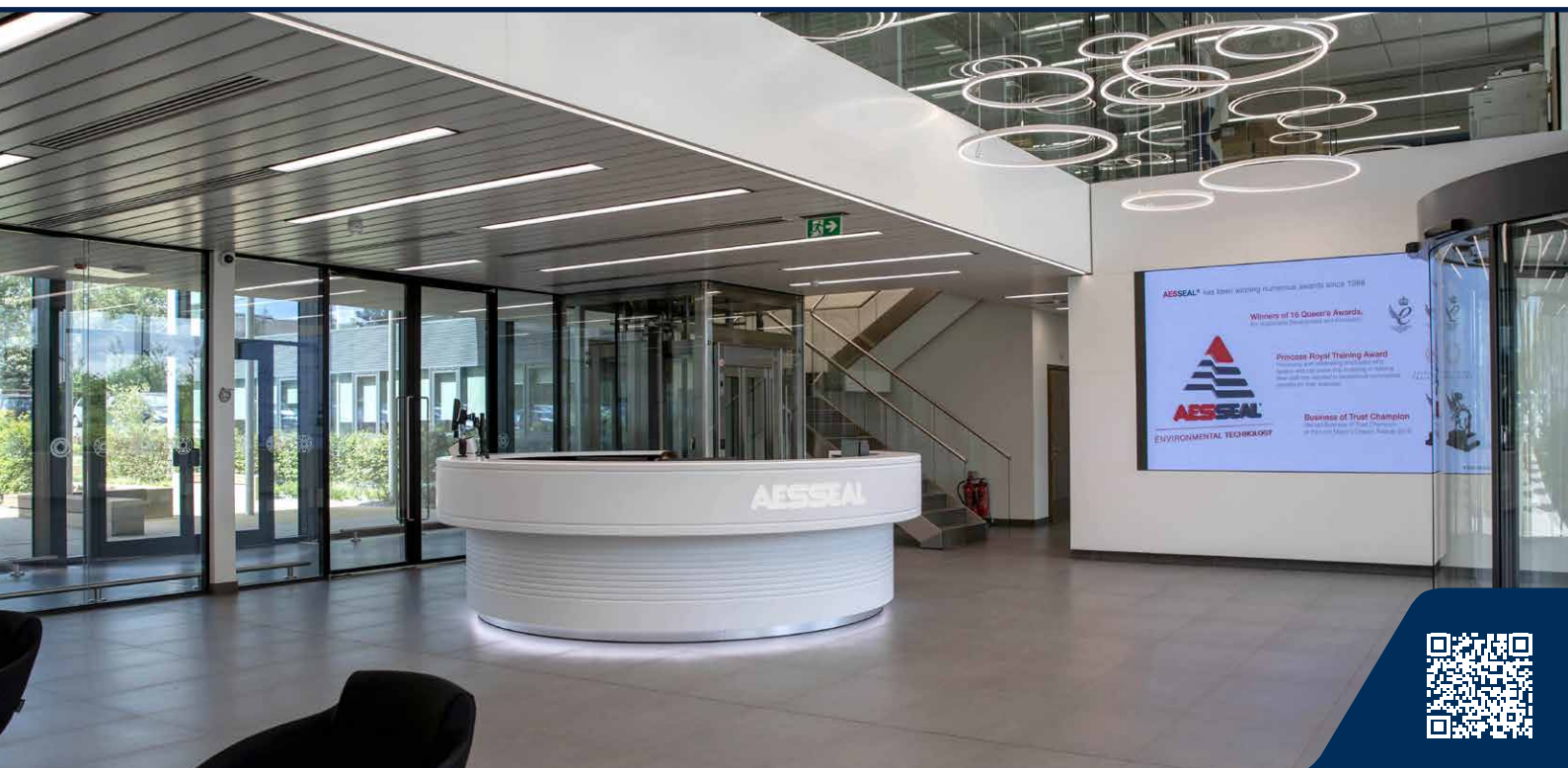
At AESSEAL®, we recruit and develop the most talented individuals, whether that's in engineering, sales, service, or support roles.

Our focus - to us, the customer really is king. It is our focus on customer service and quality that has seen us grow year on year since we were established in 1979. Today, we have 230 locations worldwide, supplying customers in 104 countries, and employ a global network of sales engineers and technical support specialists.

Working collaboratively across our global operation, we are one 'family' community, where teamwork is encouraged and clarity, mutual respect, and understanding are key. If you would like to find out more about our current vacancies and apprenticeship schemes, please navigate using the careers menu.

What are the benefits to working for AESSEAL®?

- Pension Scheme including Salary Sacrifice
- Aspire to Retire Scheme
- Life Assurance
- Length of Service Scheme (5 years, 10 years, 15 years, 20 years, 25 years, 30 years and 35 years)
- Mindful Employer – Supporting Mental Health
- Cycle2Work Scheme
- EV Car Scheme – partnered with Octopus Energy
- BenefitHub – exclusive discounts, rewards and cashback
- STAR Awards - £250 Amazon Voucher
- Sporting Tickets
- Westfield Health cover at discounted rates
- Help@Hand – Employee Wellbeing and Mental Health
- AES Tree Walk
- Free On-Site Parking and EV Charging Facilities



Job purpose



As a Stores Operator within the Assemble, Test and Despatch area of this Mechanical Engineering organisation, the role is both busy and varied.

Along with contributing to the traditional inventory function associated with warehouse management, the purpose and boundaries of this job are much broader, whereby the Stores operative will assist the management and wider business departments with a variety of tasks. The Operative will be responsible for accurately picking, packing, and dispatching customer orders to ensure timely delivery and customer satisfaction.

The Stores Operative must be able to work effectively as both an individual and in a team, whilst also being proactive, diligent and detail orientated in their approach to work. They must be capable to switch tasks seamlessly, whilst enjoy working on their feet in the operational space of production.

Stores Operative Role

Job Title: Stores Operative

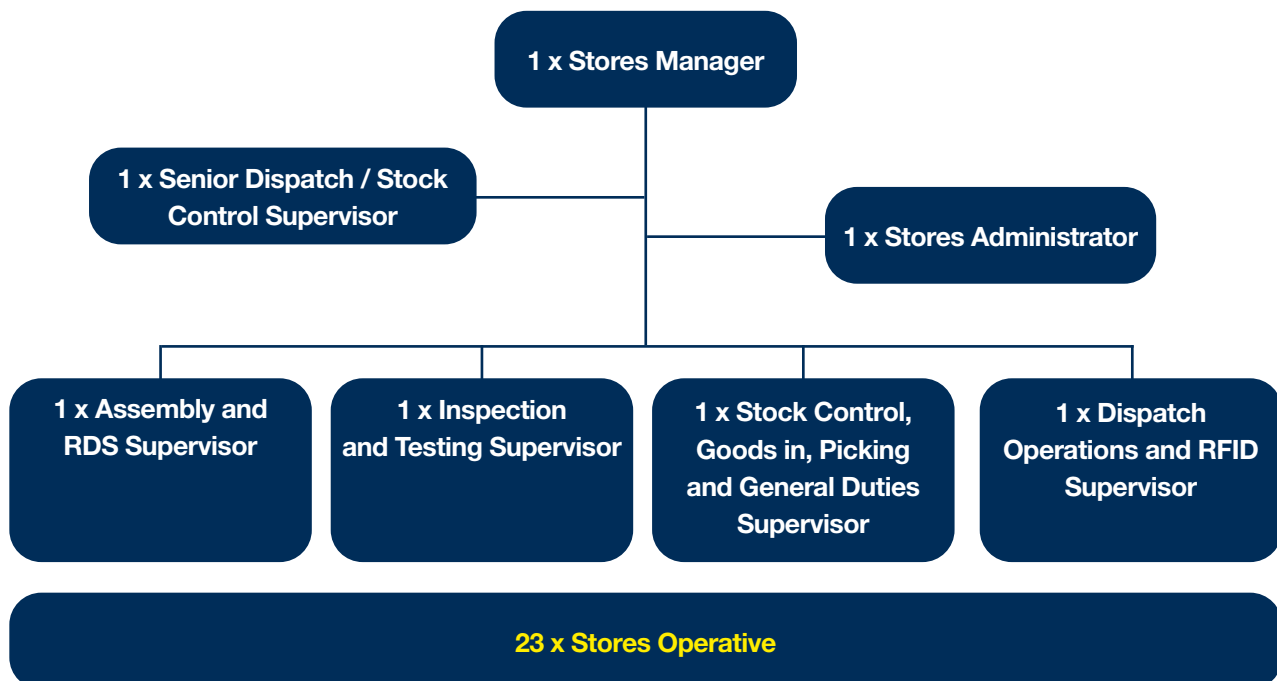
Department: Stores

Location: Mill Close, Bradmarsh Business Park, Rotherham, S60 1BZ

Organisation: AESSEAL plc

Reports to: Stores Manager

Organisational Chart



A. Goods / Receipt Inwards.

Contribute to the receipt of 'goods in' within business operations.

B. Storage of component parts to inventory.

After inspection, store parts within the inventory.

C. Picking / Collection of component parts from inventory.

Pick parts from the inventory for sales orders.

D. Mechanical Seal Assembly Functions.

Contribute to the assembly of mechanical seals.

E. Inspection / Testing and Inspection of Assembled Seals and component parts.

Contribute to the inspection, testing and etching of assembled seals in preparation for boxing and dispatch.

F. Boxing and Dispatch Operations.

Contribute to boxing and dispatch operations.

G. Stock Control and Stock Taking.

Undertake stock control and stock taking duties for audit purposes.

H. Rectification of Stock.

Contribute to rectification of stock, so to ensure an accurate inventory.

I. General Duties.

Conduct general duties with Stores and wider business.

J. Uphold our organisational cultures and values.

Strive to uphold these in all you do.

N.B This list is not exhaustive, the job holder is required to carry out reasonable tasks within their level of skill and ability.



Skills, knowledge and experience



Criteria	Essential	Desirable
Qualifications	<ul style="list-style-type: none"> • Good standard of education. 	<ul style="list-style-type: none"> • GCSE's (or equivalent) Grade 4 / C in Maths and English. • Fork Lift Licence. • Driving Licence
Skills & Knowledge		<ul style="list-style-type: none"> • General understanding of engineering. • IT Literate / ECDL.
Experience		<ul style="list-style-type: none"> • Warehouse / Inventory experience. • Experience of working within an engineering environment. • Experience working within a picking/packing and dispatch function
Character	<ul style="list-style-type: none"> • Desire to provide exceptional customer service. • Effective communicator. • Team Player. • Collaborative. • Receptive to learning, development, change initiatives & continual improvement. • Adaptable / Pro-active / problem solver. • Diligent • Strong attention to detail and accuracy. 	

AESSEAL plc, Mill Close, Rotherham, S60 1BZ

Email: Careers@aesseal.co.uk

