



EXPERIENCE THE EXCEPTIONAL

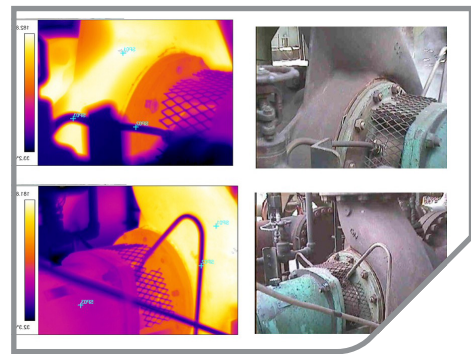
## Improved pump reliability.

A major oil refinery in South Africa had an unreliable mechanical seal on a cooler water pump. Despite competitors trying a number of different seal support system configurations, the seal was failing approximately every 6 to 9 months. This was as a result of dry running, causing vaporisation, damaged elastomers, seal face wear and pump bearing failure as a result of heat transfer.

AESSEAL® installed a CAPI A type 23 mechanical seal along with an API Plan 23 seal support system, utilising a double Python cooler. The new solution eliminated the need for frequent maintenance and has been operating for over 54 months. Subsequently the customer upgraded eight similar pumps on the plant.

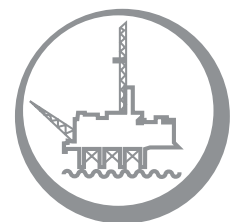
*“With the good performance of the seal and python cooler as a combined solution, we could afford to do the upgrades on the 8 units from our maintenance budget in 2 years. The pump bearing temperatures drop with about 20°C and run @ 65-80°C”*

**Mechanical Rotating Equipment Group Leader**



## ‘Reduced maintenance through improved reliability’

Industry:	Oil & Gas
Product:	CAPI-23 Single Seal with API 23 Seal Support System using double Python cooler
Application:	Cooler water
MTBF Increase:	500%
Savings:	£343,000 ROI: <10 months
Reference N.O:	CH01447



[www.aesseal.com](http://www.aesseal.com)