



ENVIRONMENTAL TECHNOLOGY

## CKD™ saves thousands a year at Spanish chemical plant

A competitor's single seal was proving ineffective in coping with a high-viscosity product in use at a chemical plant in northern Spain.

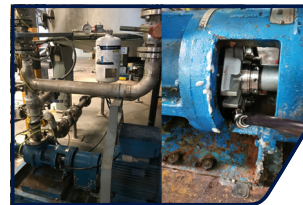
The length of time it took the product to travel from the tank to the pump meant that the seal was sometimes operating dry. This, and the seal's inability to cope with the viscosity of the product, caused the seal to leak after just a few tank filling cycles. The result was a loss of product and continual leakage around the base of the pump. Clean-up was a lengthy and laborious operation, and the faulty seal had to be replaced every few months.

AESSEAL® recommended replacing the existing seal with the CKD™ double stationary cartridge seal with a 10 litre SW2™ water management system. The CKD™ provides highly technical sealing solutions applicable for all industry sectors, and features stationary seal face technology to accommodate angular shaft to housing misalignment, bi-directional flow induction for effective barrier heat removal, and monolithic seal face technology.

The new seal was installed in July 2022 and operated for three and a half years without a problem. This compares with the previous MTBF of just two to three months. The customer was very satisfied with the performance of the solution and a new CKD™ was purchased in January 2026. The double cartridge seal and SW2™ with API 53 A plan prevents the seal from running dry and, as there is more pressure in the barrier fluid, it also prevents the seal from collapsing as a result of the highly viscous nature of the pumped fluid. Eliminating the cost of replacement seals, the labor costs involved in constant clean-up, and the loss of product is saving the client an estimated €6,000 (US\$7,000) a year. The area around the pump is easily kept clean, with no leakage of harmful materials into the working environment.



before



after

**'Reliability increased from <3 months to >3 years'**

Industry:	Chemical
Product:	CKD™ & SW2™
Application:	Transfer pumps
MTBF Increase:	1300%
Savings:	€21,000 / \$24,500
Reference N.O:	TD3134045



[aes seal.com/info](https://aes seal.com/info)