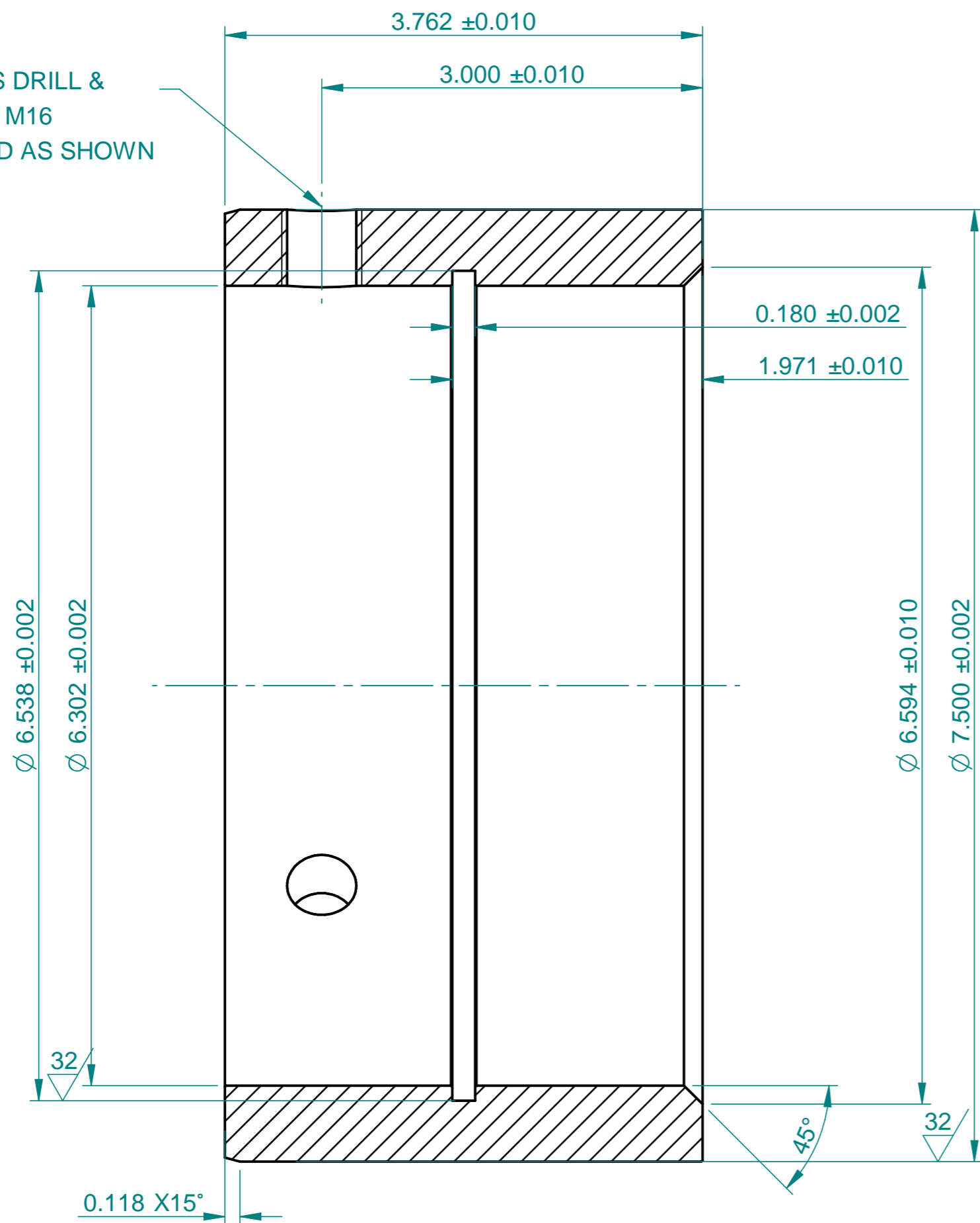
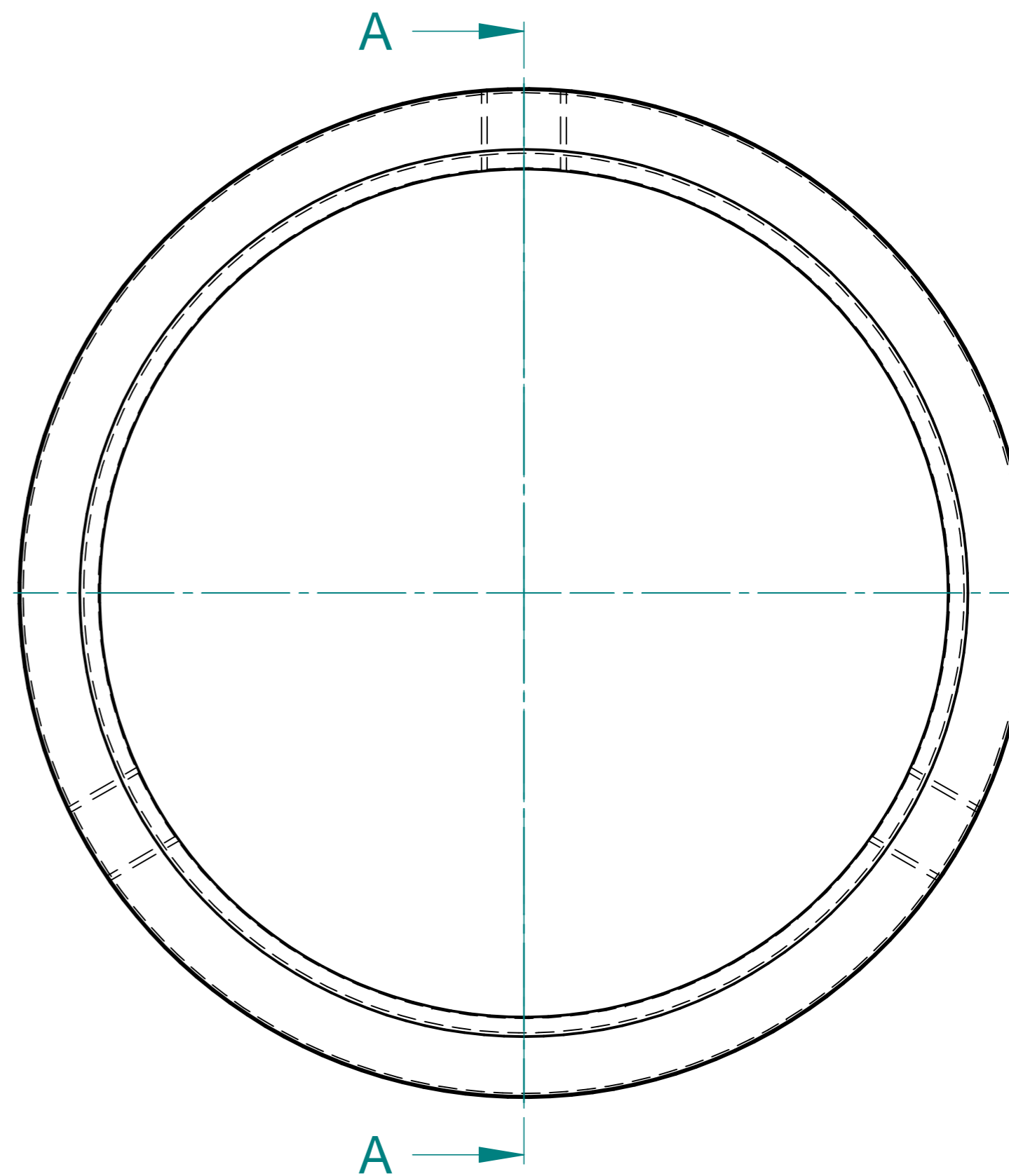


3 OFF HOLES DRILL &
TAP TO SUIT M16
EQUI SPACED AS SHOWN



SECTION A-A



- NOTES:-**
 1. REMOVE SHARP EDGES.
 2. MASS= 6.214 kg.

ISSUE	ECR No	DRN	AUTH	DATE
B	EC3024355	SW	CS	18/11/2020
C				
D				
E				
F				
G				
H				



AESSEAL plc

BRADMARSH BUSINESS PARK
MILL CLOSE, TEMPLEBOROUGH
ROTHERHAM S60 1BZ

THIS DRAWING IS CONFIDENTIAL TO AESSEAL plc AND NEITHER THE DRAWING ITSELF, NOR ANY INFORMATION DERIVED FROM IT, SHOULD BE MADE PUBLIC, OR DIVULGED, EVEN IN CONFIDENCE TO ANOTHER PARTY WITHOUT THE EXPRESS PERMISSION OF AESSEAL plc. © COPYRIGHT AESSEAL plc AS SIGNED AND DATED.

UNSPECIFIED TOLERANCES

LINEAR: +/- 0.01" (0.25mm)

ANGULAR: +/- 30'

SURFACE FINISH: 63 µin (1.6 µm)

CONCENTRICITY: 0.002" (0.05mm)

TITLE: 190mm LABTECTA WARMAN STUB SHAFT DETAILS

PROJECTION 3RD ANGLE	SCALE 2:1	SIZE A2	MAT'L:316L SS
	UNITS: INCHES UOS		SRM: RT236/150
DRAWN TOM LOCKWOOD 23/06/2009	STOCK CODE: L1-190-01T---WAR/01		
CHECKED DANIEL PARIS 03/07/2009	DRG No 2011625	ISS. B	