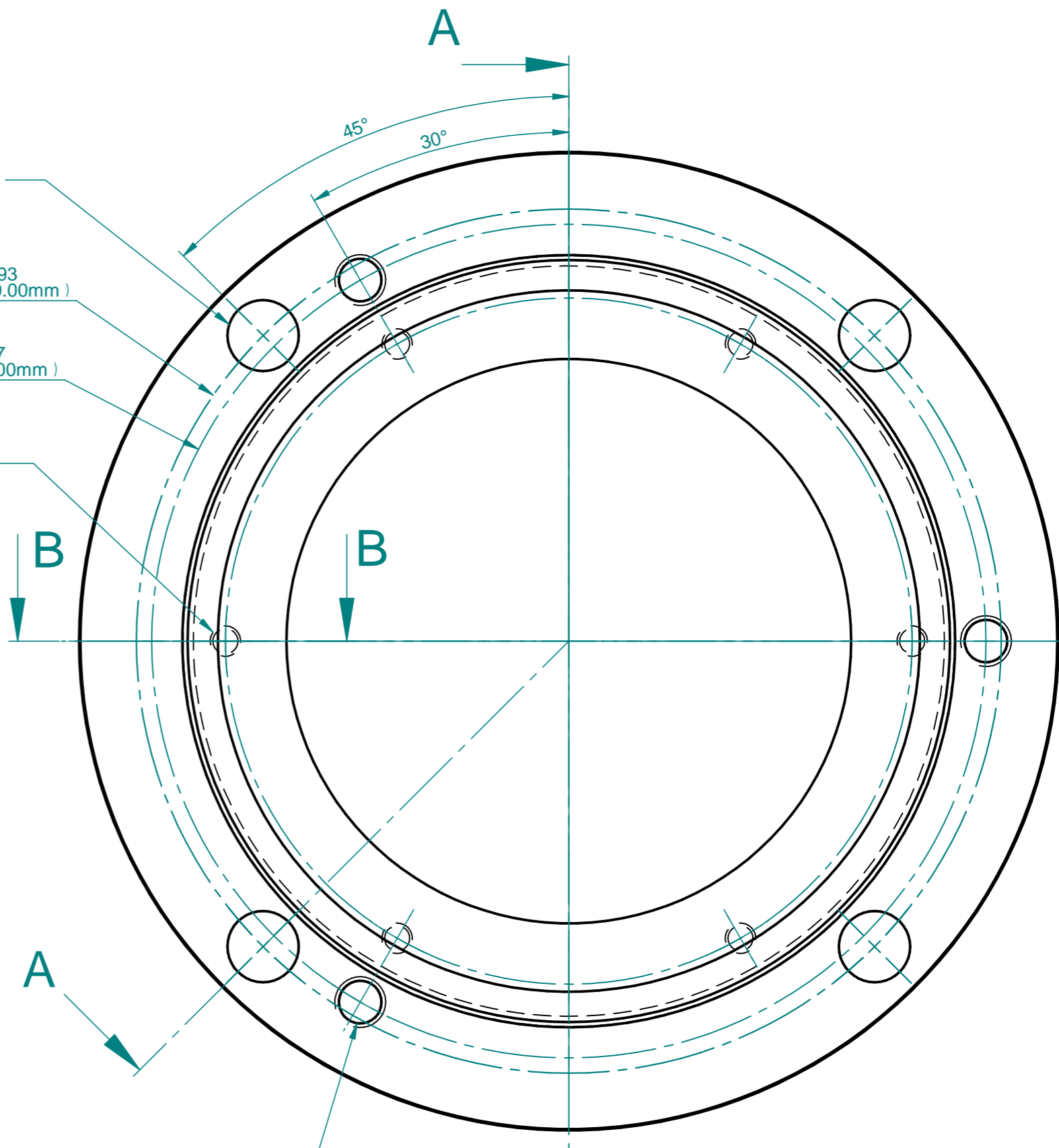
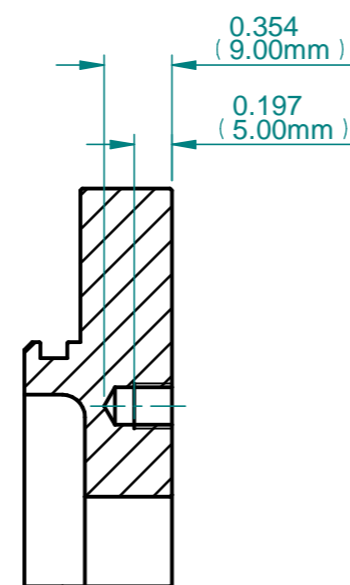


4 OFF HOLES Ø14.00mm THRU' EQUI-SPACED ON PCD AS SHOWN.

6.693 PCD (170.00mm)

6.457 PCD (164.00mm)

6 OFF HOLES D/T M6 TO DEPTHS SHOWN, EQUI-SPACED ON PCD SHOWN



3 OFF HOLES DRILL FOR M10 THRU' THEN TAP M10 SPACED AS SHOWN.

- NOTES:-
1. REMOVE SHARP EDGES.
 2. MASS=1.921 kg.
 3. WAS ADMIT DRAWING 8010453.

ISSUE	ECR No	DRN	AUTH	DATE
B				
C				
D				
E				
F				
G				
H				



AESSEAL plc

BRADMARSH BUSINESS PARK
MILL CLOSE, TEMPLEBOROUGH
ROTHERHAM S60 1BZ

THIS DRAWING IS CONFIDENTIAL TO AESSEAL plc AND NEITHER THE DRAWING ITSELF, NOR ANY INFORMATION DERIVED FROM IT, SHOULD BE MADE PUBLIC, OR DIVULGED, EVEN IN CONFIDENCE TO ANOTHER PARTY WITHOUT THE EXPRESS PERMISSION OF AESSEAL plc. © COPYRIGHT AESSEAL plc AS SIGNED AND DATED.

UNSPECIFIED TOLERANCES

LINEAR: +/- 0.01" (0.25mm)

ANGULAR: +/- 30'

SURFACE FINISH: 63 µin (1.6 µm)

CONCENTRICITY: 0.002" (0.05mm)

TITLE: 85mm WARMAN BEARING END PLATE (111mm)

PROJECTION 3RD ANGLE	SCALE 1:1	SIZE A2	MAT'L: 316L SS
	UNITS: INCHES UOS		SRM: RS064/01
DRAWN S KHEDKAR	29/04/2015	STOCK CODE: L1-111-02DDD-WAR/01	
CHECKED STEVE WILKINSON	04/03/2016	DRG No 3037795	ISS. A

