



ENVIRONMENTAL TECHNOLOGY

# Seal Application Form

## AESSEAL Marine



### UK Sales & Technical Advice

AESSEAL Marine plc  
4, Venlo Industrial Estate  
17A Knowles St  
Bradford BD4 6HA  
Tel: +44 (0) 1274 720775

[sales@aessealmarine.com](mailto:sales@aessealmarine.com)

## Customer Details

Company Name	
Industry	
Contact Detail: Name/Email/Phone no	
Sales Engineer Name / Email Address	
Customer Ref	

## Equipment Details

Is an Existing Drawing Available. Yes/No	
Vessel Type/Name	
Shaft Speed	
Shaft Material	
Number of Shaft	
Axial/Radial Movement	
Name/Type the Current Sealing Solution	
Inflatable shut-off Seal Required? <a href="#">Inflatable Shut Off Seal - Brochure   AESSEAL</a>	

## Product Details

Oil Lubricated Application? Yes/No If No, please contact the technical department ( <a href="mailto:sales@aessealmarine.com">sales@aessealmarine.com</a> )				Is Cooling Water Available? Yes/No	
Lubricating Oil Name		Is it EAL Approved? Yes/No		Oil Viscosity	
Temperature		Pressure		Abrasives Present?	
For Aft Seals Application Only					
Max Draft		Temperature		Operating Method*	

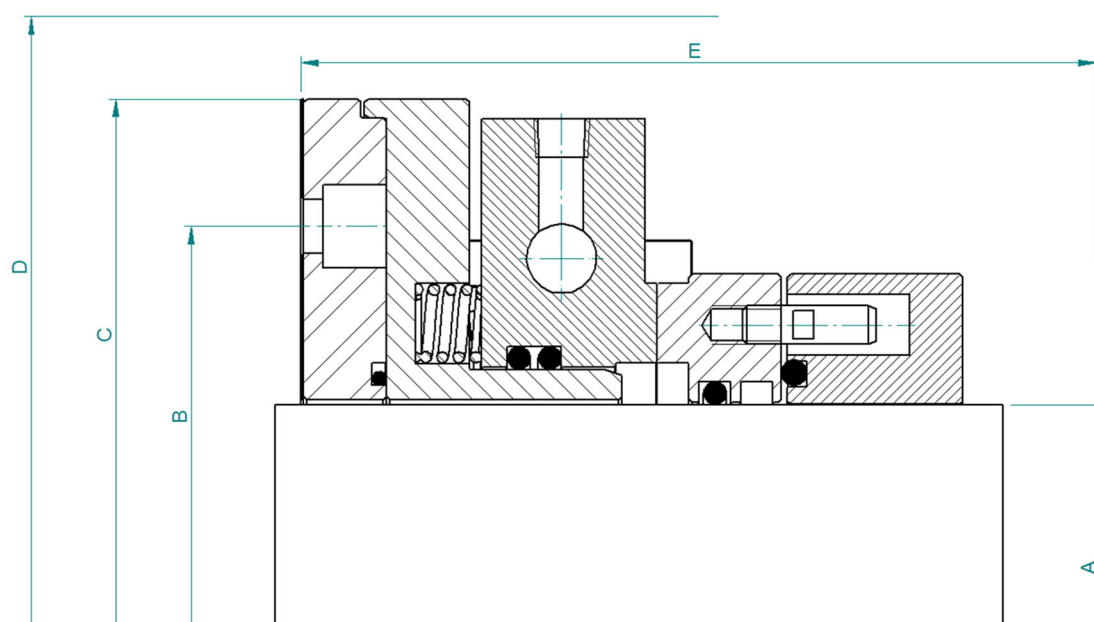
\*refer to the link for operating set up [VID-UK-MBMF\\_MARINE SEAL\\_01 \(wistia.com\)](#)



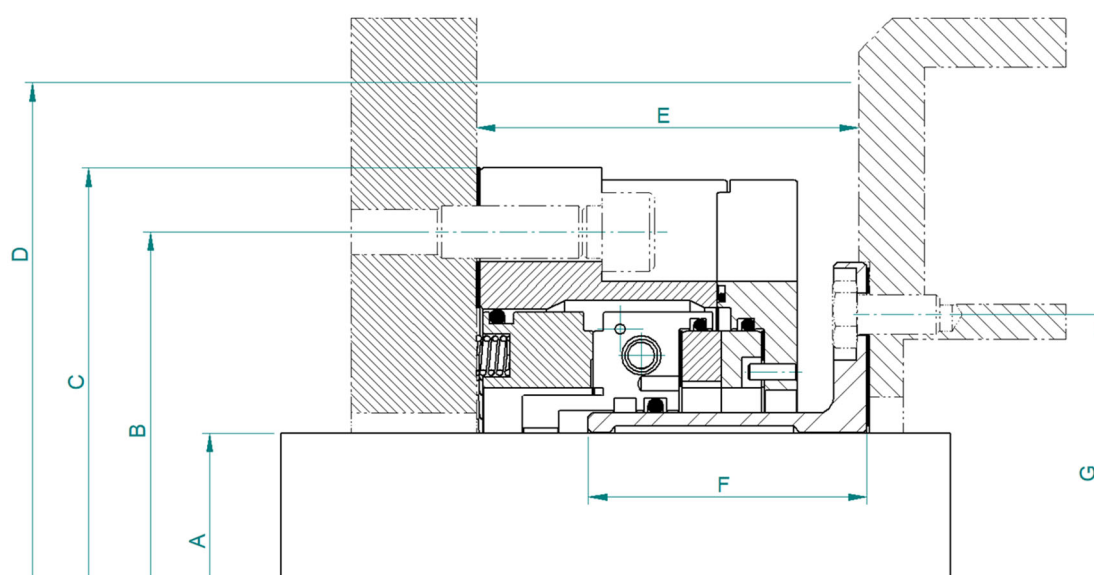
## Dimensional Details

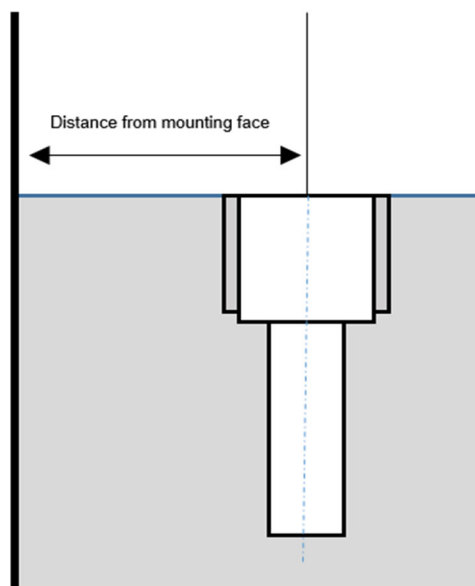
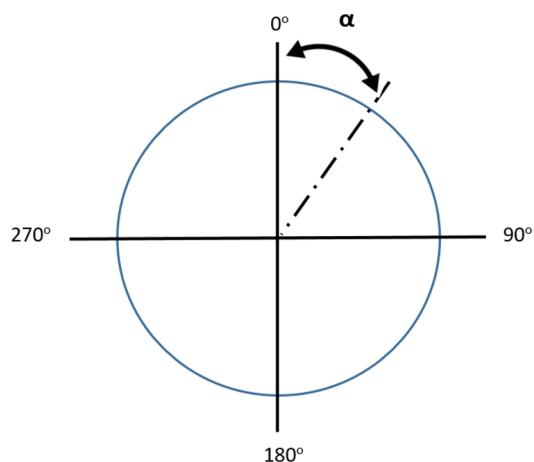
A. Shaft Size	B. PCD	C. Gland Outer Diameter	D. Radial Space	E. Distance to The Nearest Obstruction	F. Liner Length	G. Liner PCD

### SBMF – Forward Seal



### MBMF – Aft Seal





	Port 1	Ports 2	Ports 3	Port 4
Port Function (i.e. BI, BO...)				
$\alpha$ . Port Position Angle				
Distance From Mounting Face				

### Additional Information: